

**Leaving a gift  
to St Luke's in  
your Will**



**St Luke's**

Sheffield's Hospice



# Gifts in Wills

pay for the care and support of 1 in 5 of our inpatients

St Luke's has proudly served our community since we first opened our doors in 1971. Since then, we have cared for thousands of local people and their families at what is one of the most difficult times of their lives.

Our mission is to provide the end of life care we would all want for our own loved ones – dedicated and compassionate, allowing each person to live every day they have left to its fullest; and then, when the time comes, the chance of a peaceful, dignified, painless death.

As a charity, we only receive 26% funding from the NHS. We are totally reliant on voluntary contributions from our community to care for local people and fund specialist doctors like Evie, who is on the front cover of this brochure. The gifts we receive in Wills are a crucial part of our funding – without them, we simply could not continue.

A thoughtful decision often made many years earlier will help to secure the future of hospice care for local people for years to come. This brochure explains the different types of gift you can leave – and how you can ensure that St Luke's can continue to benefit from your generosity.



# 'I'm proud of Bob's legacy to St Luke's'

My husband Bob was diagnosed with prostate cancer in 2014. It was a huge shock. We lived on a sheep farm up in Stocksbridge and Bob was such a fit, active, outdoor person. Bob ended up staying at St Luke's for five and a half weeks – the last weeks of his life.

Bob and 'his' nurses became a team, with him at the very centre. Every three days they would ask him what he wanted to achieve for the next three days. We saw all our old friends and extended family and had the conversations we needed to have with our children and grandchildren. With the nurses' encouragement, Bob settled his affairs and that gave him great peace of mind.

One thing we did together in those final weeks was to change his Will. Bob wanted to make sure we had updated our wishes for our family; but he also felt very strongly he wanted to leave a sum to St Luke's. Life carries on now and my sons are continuing Bob's work on the farm, adding a farming education centre which was of great interest to Bob. That's going to be his legacy. I'm proud of him – and proud that he chose to support St Luke's in his Will.

*Anne*

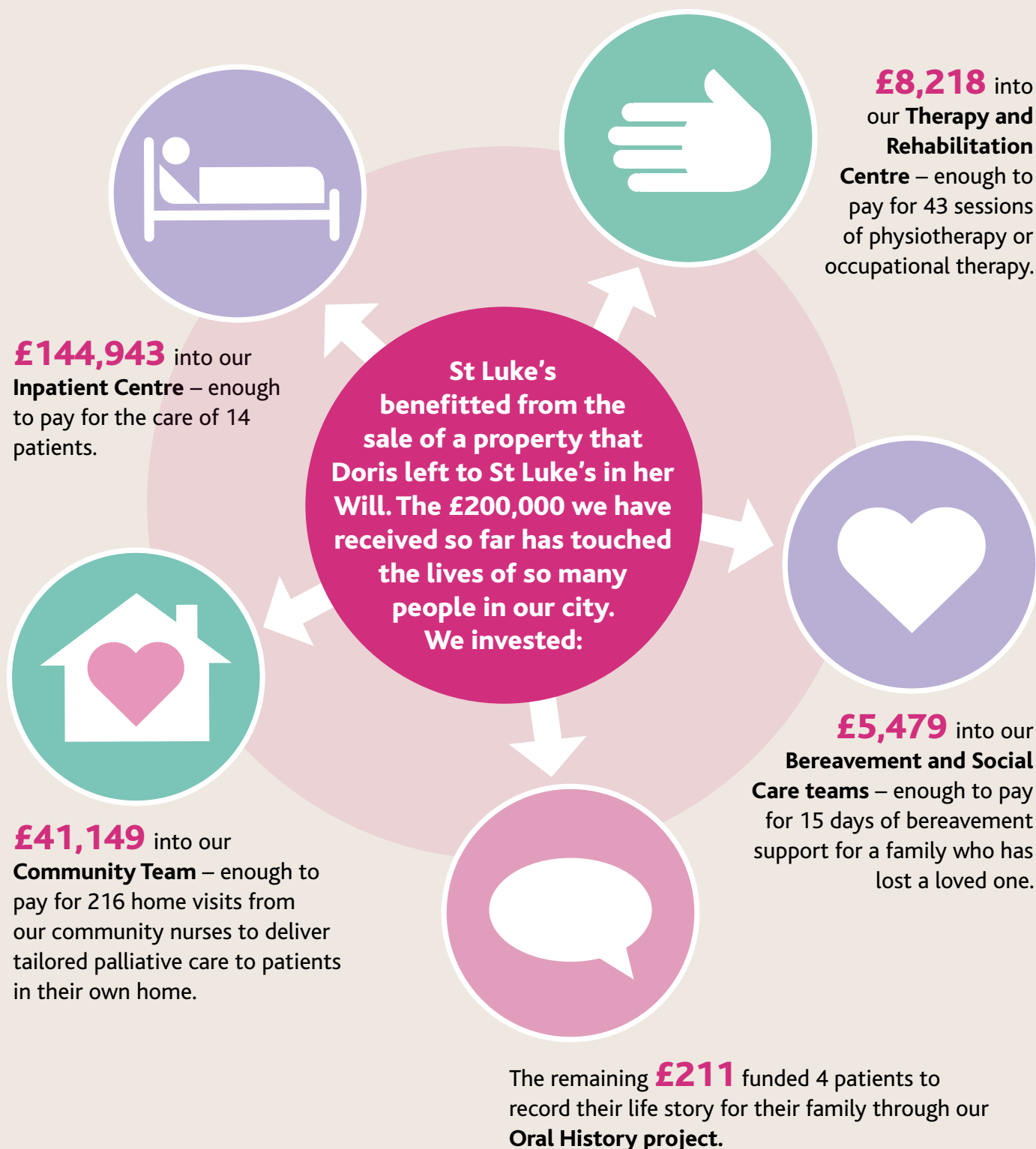



**Bob and Anne on their farm in Stocksbridge with their sheep.**

Photo courtesy of The Yorkshire Post

# Doris' generous gift

in her Will has helped to care for patients and families right across Sheffield



A woman with dark hair and glasses, wearing a grey cardigan over a light-colored top, stands in a garden. The background shows a building with large windows and some greenery.

Lisa in the St Luke's garden, telling us why she chose to support St Luke's in her Will.

# Lisa's legacy

## 'St Luke's is part of our family's past and future'

Over the last 15 years, St Luke's has become such an important part of our lives.

My husband Lee and I have spent pretty much our entire lives in Sheffield – all our family are here.

In 2000, St Luke's looked after Lee's grandad, just briefly. But even back then I remember thinking how surprised I was by how warm and welcoming St Luke's was. Then, in 2015 Lee's Nannan came to be cared for at St Luke's and she stayed with them for her final week.

We really got to see St Luke's work in detail that second time – to see the incredible effort everybody involved put in to make Nannan's days as peaceful as possible and give us all the support we needed. Mike, their wonderful Chaplain, was so supportive; we ended up asking him to take her funeral service.

Our son Haydn was born in 2011 and we recently made our joint Will, taking advantage of St Luke's Will Month. We wanted to secure his future – but we wanted to include a gift to St Luke's as well. Not to pay for nan and grandad's care – we know that was given freely; but remembering St Luke's in our Will ensures that St Luke's can continue to be there for our family in the future. It's also the easiest way for us to give a significant gift to St Luke's. It feels great to know that others in 'our' city will benefit from that.

*Lisa*

Peter, one of our inpatients, reading a paper with St Luke's Healthcare Assistant, Chris.



# Making a Will protects you and your loved ones

A Will is a vital document for you, ensuring that those you care about are provided for after your death. Without a valid Will, the specific wishes you may have for your family or loved ones may not be carried out as you would wish. The final value of your estate after tax can often be significantly reduced.

If you have not yet made a Will, it is strongly recommended that you do so. It is a simple process that most solicitors will be able to assist with. The Law Society offers a free 'Find a local Solicitor' service which can be found at The Law Society's website, [lawsociety.org.uk](http://lawsociety.org.uk) – or by calling **020 7320 5650**.

St Luke's also runs a 'Will Month' each year, where local solicitors offer to create a free, simple Will for an individual or couple, in exchange for a donation to our care. More information is available on our website [www.stlukeshospice.org.uk](http://www.stlukeshospice.org.uk).

## Leaving a gift to St Luke's will help to protect hospice care for your community

A gift in a Will is a way to make a real difference to the lives of local people. Many people choose to leave a gift in their Will to St Luke's because it enables them to make a substantial, significant contribution to a local charity that means so much to them, without a penny having to be donated now.

We ask you to consider joining the many others in your community who have already taken this positive, thoughtful decision. If you are yet to create your Will we urge you to do so – and include a consideration for St Luke's if you possibly can.

If you have already made your Will we ask you to consider making a codicil, a small change, to ensure that St Luke's and the care we provide to local people like you and your loved ones may continue.

Thank you.

## Our promise to you

1. We realise that, rightly so, those close to you will always come first.
2. We will never sell or swap your details with other organisations for them to use for their own purposes.
3. We will use your gift carefully and cost-effectively so that it has the greatest impact for our patients and their families.
4. We will give you the opportunity to be connected with the work we do at St Luke's. This work is only made possible by gifts like yours.
5. At any time in the future, you have the absolute right to change your mind about leaving a gift to us in your Will.
6. We will handle whatever gift you leave us effectively and also with care, sensitivity and respect.



## Hello, I'm Kathryn, Head of Fundraising at St Luke's

Every day, I meet supporters of St Luke's and many ask me about the best way they can help. The truth is, there are so many ways that people contribute to St Luke's care; but a gift in a Will is probably one of the easiest and most effective ways for someone to support us.

Making or changing a Will that provides for those who are close to you while ensuring that your specific wishes are met is not something to be taken lightly.

So if you would like to discuss what arrangement might be best for you, please get in touch to arrange a visit or to have an informal chat by emailing [k.burkitt@hospicesheffield.co.uk](mailto:k.burkitt@hospicesheffield.co.uk) or call **0114 235 7551**.

Or, fill in the form at the end of this brochure and I will be in touch soon.



Thank you very much for taking the time to consider this important matter. We are so grateful for your support.

*Kathryn*



# Different ways to support St Luke's in your Will

There are several kinds of gifts you can leave. Each gift is special to us and ensures that we're able to provide the very best care and support to those in need, today and into the future.

## **A cash gift or 'pecuniary gift'**

This is when you choose to leave a single, precise cash gift from your estate.

## **A specific gift**

This type of gift is usually something like property or an individual valuable item, such as an antique or piece of jewellery.

## **A life interest**

If you wish, you can leave a gift for use over a specific period – for example, the income from an investment. After that time has passed, the gift could then be passed on to another recipient or family member.

## **A share of your estate or 'residuary' gift**

After you've provided for your loved ones and taxes have been paid, you could choose to leave a share, or the full remainder (the residue) of your estate to St Luke's. This means that your estate is passed on to those you care about as well as supporting hospice care into the future.

## **Inheritance Tax**

Each individual has a tax-free allowance of £325,000 before Inheritance Tax at 40% becomes due. Married couples can combine their allowances. From April 2017, there is also an additional allowance for each individual (£100,000 in 2017, rising to £175,000 in 2021) which is available only if the estate includes the 'family home'. All gifts to charities such as St Luke's are deducted from the value of the estate before Inheritance Tax is calculated and thus can reduce the total amount of Inheritance Tax due.

For more information, please visit the HMRC website:

[www.hmrc.gov.uk/inheritancetax](http://www.hmrc.gov.uk/inheritancetax)





# Your local solicitor is there to help and guide you

We strongly recommend using a specialist solicitor or Will-writing expert to help create or change your Will. They can advise and support you and ensure that your estate is distributed exactly according to your wishes. They can also advise you on how to minimise the impact of Inheritance Tax on your estate.

If you do decide to leave a gift to St Luke's in your Will you will need to provide clear and unambiguous instruction to your executors. Here is some wording we recommend you discuss with your solicitor.

**For a residuary legacy:** I give all / a fraction / a percentage of the residue of my estate absolutely to St Luke's of St Luke's Hospice, Little Common Lane, Sheffield, S11 9NE, Registered Charity Number 254402, to be applied by St Luke's for its charitable purposes, and I further direct that the receipt of the Hon. Treasurer or any other proper officer of St Luke's for the time being shall be sufficient discharge to my trustees.

**For pecuniary legacy:** I give to St Luke's of St Luke's Hospice, Little Common Lane, Sheffield, S11 9NE, Registered Charity Number 254402, absolutely, the sum of (amount in figures, amount in words) to be applied by St Luke's for its charitable purposes, and I further direct that the receipt of the Hon. Treasurer or any other proper officer of St Luke's for the time being shall be sufficient discharge to my trustees.

**For a specific gift:** I give to St Luke's of St Luke's Hospice, Little Common Lane, Sheffield, S11 9NE, Registered Charity Number 254402, absolutely, (write in here whatever you wish to give) to be applied by St Luke's for its charitable purposes, and I further direct that the receipt of the Hon. Treasurer or any other proper officer of St Luke's for the time being shall be sufficient discharge to my trustees.



Therapy and Rehabilitation patient, Jean and St Luke's volunteer, Diane, creating a memory box together in an art therapy session.

# Glossary of Terms

**Estate:** The property, including money, owned by the deceased, after any debts and/or expenses have been taken into account.

**Beneficiaries:** People of organisations – for example, a charity – who benefit from a Will.

**Executors:** Person(s) appointed in a Will by the testator to deal with the estate after his/her death.

**Guardian(s):** Person(s) appointed in a Will by the testator to look after his/her children, if there is no one else with parental responsibility to do so.

**Residuary gift:** A share of the estate (i.e. percentage) allocated in the Will by the testator.

**Pecuniary gift:** A single, precise cash gift from your estate.

**A specific gift:** An individual valuable item, such as an antique or piece of jewellery.

**Testator:** A person who has made a Will or given a legacy.

St Luke's patient,  
Dennis, sharing a joke  
with Clare, St Luke's  
Service User  
Co-ordinator.



# Your Will protects your wishes for those close to you – and can also protect St Luke's which will care for them if needed.

Please choose below all the options that apply to you and send this form back to us, free of charge, to: Freepost RSZT-RZEA-GEYC, St Luke's, Little Common Lane, Sheffield, S11 9NE.

- I have already included St Luke's in my Will.
- Please send me details about Will Month.
- I would like a member of the St Luke's team to contact me to discuss giving in Wills.

Please write your details below:

Title	First Name	Surname
Address		
Postcode		
Telephone		
Email		

We'd like to keep you up to date with our news, developments and events. We will never sell or swap your details with other organisations for them to use for their own purposes.

Preferred communication methods:

- I am happy for St Luke's to contact me.
- No thank you, please do not contact me.



Sheffield's Hospice

t: 0114 236 9911

e: [info@hospicesheffield.co.uk](mailto:info@hospicesheffield.co.uk)

w: [www.stlukeshospice.org.uk/support/wills](http://www.stlukeshospice.org.uk/support/wills)



Cover image:

**Doctor Evie, a St Luke's specialist,  
talking with a patient on our  
Inpatient Centre.**



St Luke's, Little Common Lane, Sheffield, S11 9NE

t: 0114 236 9911

e: [info@hospicesheffield.co.uk](mailto:info@hospicesheffield.co.uk)

w: [www.stlukeshospice.org.uk/support/wills](http://www.stlukeshospice.org.uk/support/wills)

Registered Charity no. 254402

